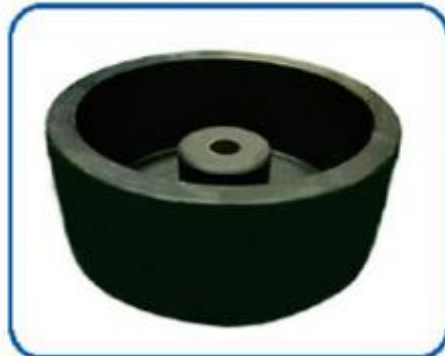


# How to Calibrate the Semi-Automatic Round Bottle Labeler

?????????? ?????????? :

## How to Calibrate the Semi-Automatic Round Bottle Labeler

A good semi-automatic round bottle labeler can handle bottles of various sizes and shapes. It uses a stepper motor to ensure uniform and steady labeling. A tabletop version will have a synchronization chain and synchronous wheel for stepless speed regulation. This machine is easy to use, and you should know how to calibrate it before using it. Read the instruction manual for more information.



A good semi-automatic round bottle labeling machine will have a compact design, a small footprint, and a simple adjustment mechanism. Desktop models are often the best choice because they require less space and can integrate with other machines on the production line. Lastly, a small size makes this machine easy to transport and assemble. The user interface also displays any abnormalities, and guides you through troubleshooting.

A semi-automatic round bottle labeling machine is a great choice for companies looking to label bottles. It features both single and double-sided labels and has a smart control system to minimize waste and leakage. Its compact design also makes it easy to move and assemble. It also has many useful features. Here are some things to look for in a semi-automatic round bottle printer.

Before using the semi-automatic round bottle labeler, it's important to calibrate it. This is so you can make sure that the labels are accurate. Besides, you should also ensure that it's equipped with an

error detection system to prevent waste labels. Regardless of the size, semi-automatic round bottle labeling machines are very easy to move. They have an array of functions and are easy to set up and operate.

A semi-automatic round bottle labeler is a great choice for companies that need to label bottles quickly. It is flexible and offers double-sided labeling, and it can also be used for double-sided labeling. Its smart control system also helps avoid waste labels and leaks. Its stable and compact structure make it easy to move around. In addition to its many functions, this labeling machine is also easy to calibrate.

To calibrate the semi-automatic round bottle-labeling machine, you need to check the labels. The labeling machine should be able to accurately read the labels. It will also avoid wrinkles. It should be compatible with oval and cone containers. A double-sided machine will save time, and will produce a more uniform product. A multi-point emergency stop button should be installed at the right location for easy operation.