

Customized water bottle label printing and labeling solution

?????????? ?????????? :



The solution is composed of two parts: An industrial-grade roll-to-roll color label printer HY210 and an automatic labeling machine, which realizes label printing and labeling function and makes customized bottled water production easier and more efficient.

Part 1. Industrial-grade roll-to-roll color label printer HY210

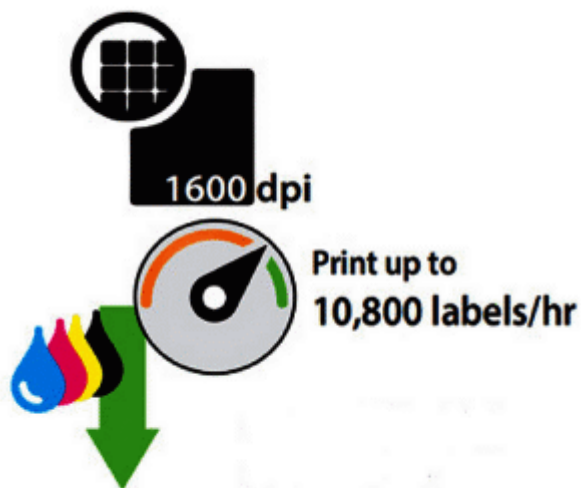
Designed for high-resolution, high-speed, professional, and personalized color label printing, the price is within the acceptable range of most companies. With small investment, high return. Widely used, production-oriented multi-faceted expert (customized water bottle label, shoe label, medical label, chemical label, etc.)



Printing Width: maximum 215.9mm
Print resolution: maximum 1600dpi*1600dpi
Printing speed: up to 12 m/min
High-definition printing: 9m/min

Main features

1. Advanced Inkjet Memjet Printing Technology Adopt advanced Memjet color page inkjet waterfall flow technology, can output 1600*1600dpi ultra high definition resolution. Print clear and beautiful labels in a better form to improve label quality and brand image.



2. Ultra-definition imaging and brilliant colors



HY210 imaging effect



Other brand imaging effects

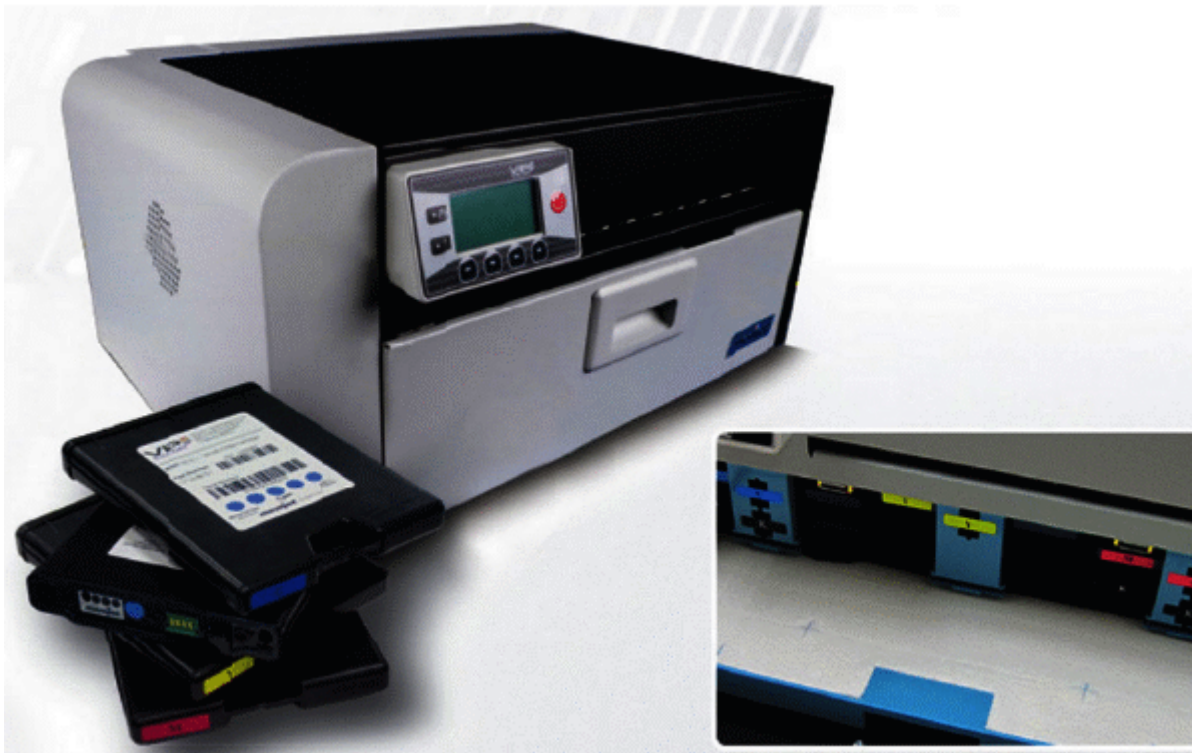
3. High speed, fast printing, fast printing speed, lower cost

Printing speed can reach 12 m/min

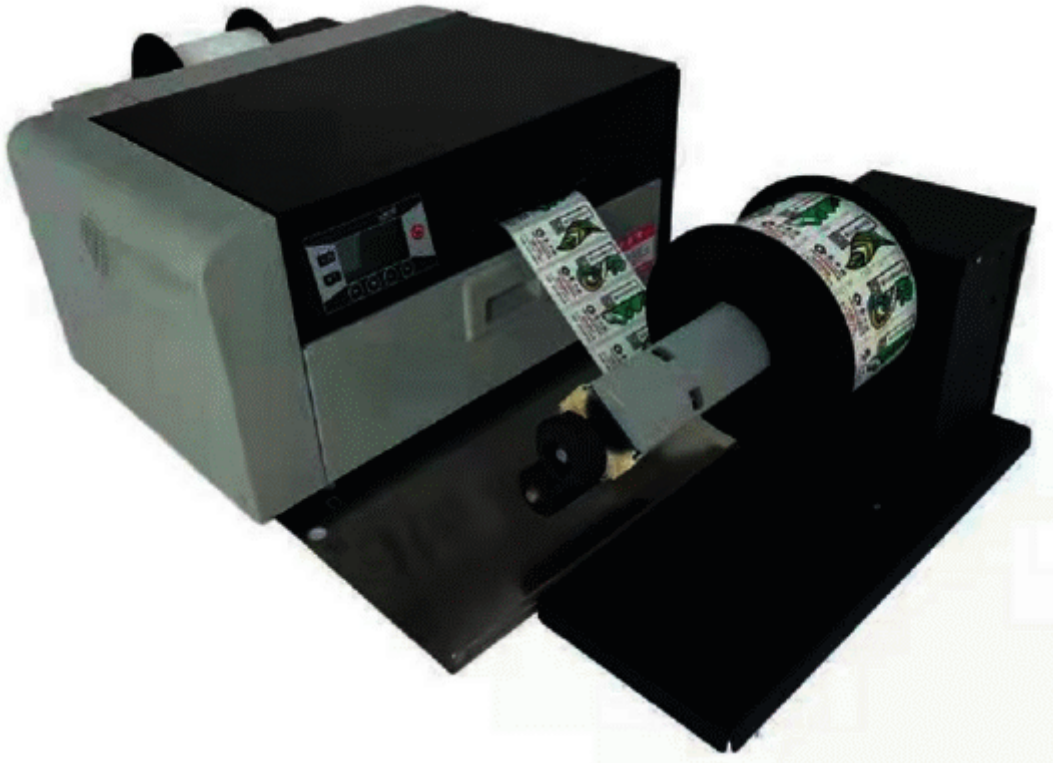
You can get about a thousand labels in a few minutes!



4. Large-capacity independent ink cartridges reduce waste and improve efficiency
Five large-capacity 200ml independent ink cartridges can reduce the need for frequent ink replenishment.
No waste ink tank is needed to reduce waste, lower cost and better economic effect!



5. Low cost/convenient
Low cost on-demand printing to reduce waste and improve efficiency Low cost-printing on demand, timely update, flexible use, effective control of printing costs



6. Convenient label custom software

Support all kinds of design software, from design to printing, print on demand anytime, anywhere.
 Support label application software to realize variable data batch printing.
 Support data variable printing and ERP system data access.



Specification

Device model	HY210
Printing technology	American Memjet color page inkjet waterfall flow technology
Printing speed	203.2mm/sec (up to 12m/min)
Resolution	1600*1600dpi
Media material width	50.8-215.9mm

Printing width	215.9mm
Data interface	USB2.0, Ethernet 10/100Base-T-T
Ink cartridge type	5pcs of 200ml individual dye ink cartridges (CYMKK)
Print mode	Roll-to-roll, roll-to-roll cutting, print and save, fold paper
Bar code parameters	For Bar code, at least Class B (Code 39), bar width 10mils
	For QR code, at least Class B (PDF417), unit size 10mils
Body size	510*285*385mm
Body weight	30kg (including ink cartridge print head)
Consumables specifications	
Paper type	Gap paper, black mark paper, continuous paper
Paper thickness	0.1-0.3mm
Printing media	Inkjet coated media, such as all kinds of synthetic paper, PET, PP
Included accessories	Printer*1, Inkjet printer head*1, USB cable*1, Power cord*1, Ink cartridges*1
Warranty	One year
Optional accessories and post- printing supporting equipment	
Optional accessories	Roll feeder, Rewinder, Computer stand
Post- printing supporting equipment	Laminating machine
	Polishing and embossing machine
	Bronzing machine
Operating environment	
Power supply	100-240V, peak current <4A
Print	15-35C; Humidity: 20-80%
Storage	-5-50C; Humidity: 20-80%
System software	Windows-based design software, such as AI, CoreDraw, NiceLabel, BarTender, etc.

Part 2. Fully Automatic Labeling Machine

This model is applicable to different kinds of round objects in pharmaceutical, cosmetic, food and other industries



Main features:

Intelligent control system:

Advanced PLC control system, servo labeling system, automatic label length detection and other high level configurations to ensure the operation is stable and high speed.

Intelligent operating system:

Multi-functional man-machine operation interface, production counter, parameter adjustment and visual monitoring, with rich help function and fault display function.

Roll label device:

It can choose the removable plastic belt or industrial synchronous belt to achieve roll label function depending on different bottle surface characteristics.

Sending and collecting device?

Machine can be operated alone with turntable and collection device, it can also be directly connected to the production line.

Printer device:

Flexible options such as thermal transfer printer or inkjet printer are optional to complete the coding and labeling functions simultaneously.

Optional function:

Zebra PAX4, 105SL print engine;

Avery 924 print engine;

Bar code detection;

Label detection;

Remaining labels alarming function.

Specification

Label objects size	Diameter: 20-100mm Height: 30-260mm	Voltage	220VAC±10% 50Hz?0.6Kw
Label size	Length: 10-300mm Height: 10-140mm	Air pressure	0.6Mpa

Labeling speed	100-250pcs/min (Depending on material and label size)	Applicable Environment	Temperature: 5-40? Humidity: 15-85%(No condensation)
Labeling accuracy	±1.0mm	Weight	200Kg
Label type	Adhesive sticker, transparent or opaque label	Dimension	1800(L)*800(W)*1500(H)mm
Label roll diameter	Inner diameter: 76mm Outer diameter: 350mm(max)	Remarks	Accept non-standard size customization