

# Whole line inspection of Cans

## Spesifikasi :

### Detail Pengenalan :

1. Empty can inspection machine
2. Liquid-level high-frequency liquid level inspection machine for high-frequency ray
3. Pressure inspection machine
4. LED-backlit anti-term stable for long-backlitCode inspection machine
5. the Advanced high precision codeVaccum detection

## 1. Empty can inspection machine

**Inspection contents:** deformation of the cans mouth, breakage, curling, foreign matter at the bottom of cans, deformation of cans wall.

### Advantage?

- With an image inspection system developed independently, the maximum speed can reach 1000 cans/min.
- Reliable detection and stable operation for a long time.
- Easy to install and easy to operate.



Empty cans image processing process



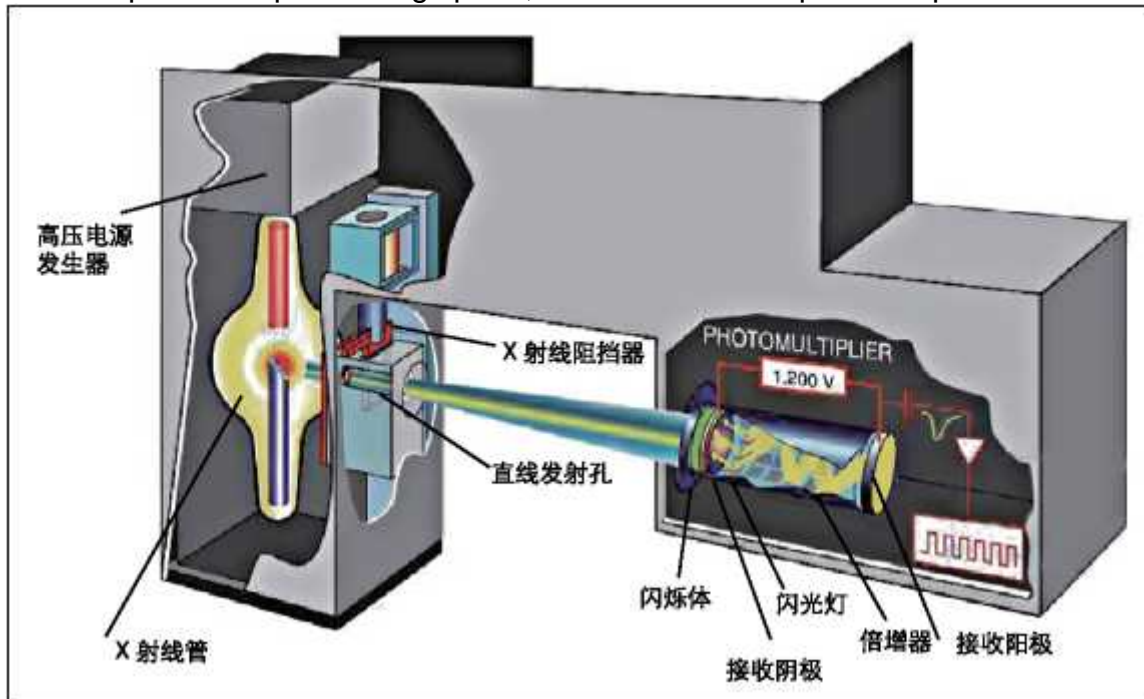
Filed equipment drawing

## 2. Liquid-level high-frequency liquid level inspection machine for high-frequency ray

**Inspection content:** liquid level of two cans, three cans, and so on.

### Advantage?

- Automatically adapt to the speed of different production lines and dynamic inspection.
- No radioisotope source, and uses soft ray design. Ray protection is safe and reliable.
- Using hardware circuit design, self-developed inspection software, a high degree of optimization, and two-piece fast processing speed, with a maximum speed of up to 72000 BPH.



## 3. Pressure inspection machine

**Inspection content:** detect the tightness and pressure of the closed container. It is suitable for two-piece cans with nitrogen and PE bottles sealed with aluminum a .

### Advantage?

- Non-contact detection, fast detection, high accuracy.
- Dynamically realize the detection of different production line two-piece.

- Main engine sealing design, manufacture, two-piece, waterproof, drip, environmental adaptability.
- The hardware circuit and the embedded operating system are adopted to ensure mold.
- Sound, light, alarm, and automatically reject substandard containers.
- Big screen Chinese display, speed night crystal, clear and bright handwriting, man-machine dialogue mode operation.
- High speeds ratio.

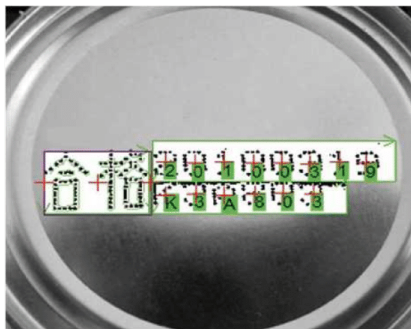


## 4. LED-backlit anti-term stable for long-backlitCode inspection machine

**Inspection content:** no cooperation, performance-price code partly missing.

**Advantage?**

- Multi module, no dead angle detection.
- A self-developed detection software system, stable detection, fast processing, and maximum detection speed of up to 1200 cans/min.
- Independent research and development of image processing algorithms can accurately identify algorithms.



Identifying code image



Inspection system interface

## 5. the Advanced high precision codeVaccum detection

**Inspection contents:** To test the tightness of airtight containers, it is suitable for two pieces of cans, three pieces of cans, and tin cans.

**Advantage?**

- Noncontact detection, high speed, high precision.
- Adapt to the speed of the production line and detect dynamically.
- Advanced sound processing technology.
- Advanced, exciting circuit, providing high energy magnetic field.

